

The Vermont State Colleges

Castleton State College

Castleton is small enough to be a community where every student matters, yet large enough to offer 30 academic programs, 20 varsity sports, and more than 40 clubs. Castleton stresses community engagement and sustainability and provides exceptional programs for first-year students.

Community College of Vermont

CCV is Vermont's second largest college, serving 7,000 students each semester. With 12 locations and extensive online learning options, our students don't have to travel far from their communities to access our degree and certificate programs, workforce, secondary and continuing education opportunities, and academic and veterans support services. Each semester, CCV offers over 1,300 courses statewide with convenient day, evening, weekend, or online options for flexible scheduling.

Johnson State College

With signature programs in the fine and performing arts, environmental sciences and education, Johnson State College engages students in the classroom and in the community through extensive field-based research, internships and service-learning opportunities. In addition to its 25 bachelor's and four master's degree programs, JSC takes pride in a community-based External Degree Program that serves 550+ students per semester throughout Vermont.

Lyndon State College

Lyndon is known for experiential learning, friendly community, spectacular hilltop campus, and distinctive professional programs including Atmospheric Sciences, Electronic Journalism, Exercise Science, Graphic Design and Video Production, Mountain Recreation, Music Business, and Sustainability Studies. First and foremost, our faculty and staff are committed to the personal and professional success of each of our 1,430 students.

Vermont Tech

Ranked among *U.S. News & World Report's* top 10 public baccalaureate colleges in the north, Vermont Tech offers hands-on education and experience in more than 40 bachelor's and associate degree programs in specialized areas of study related to agriculture, business, engineering, health sciences, aviation, and renewable energy. Its graduates are consistently sought after by some of the country's most innovative employers.

Vermont State Colleges
P.O. Box 7, Montpelier, VT 05601
(802) 224-3000
www.vsc.edu

Special Programs

For Adults

Assessment of Prior Learning (APL) and **Focused Portfolio Development (FPD)** give students an opportunity to earn college credit for their college-level learning acquired through work, community experience, self-study or other non-college experiences. Over 7,000 Vermonters have received college credit through these options; over 95% earn a college degree.

2013-14 Prior Learning Enrollment: 168

The Johnson State College **External Degree Program (EDP)** helps adult learners with at least 60 credits complete their bachelor's degrees largely in their own community, through a flexible combination of courses offered on weekends, online and in the evening.

2013-14 EDP Enrollment: 1,281

For High School Students

Introduction to College Studies helps students develop strategies for college success. The **Dual Enrollment** and **Fast Forward** programs allow high school and technical center students to earn college credit while still in high school. Students with aptitude in the STEM fields (Science, Technology, Engineering, and Math) can simultaneously complete their senior year of high school and freshman year of college through the **Vermont Academy of Science & Technology (VAST)**, dramatically reducing the cost of a degree.

2014 High School Student Enrollment at the VSC: 1,676

For Business & Industry

Vermont Interactive Technologies (VIT) gives Vermonters access to distance learning opportunities with 19 classrooms statewide and a variety of mobile technologies. VIT's mission is to support the economic health and development of Vermont citizens by providing the technical infrastructure and operational expertise necessary to deliver education, training and information equally to all areas of Vermont.

2014 VIT Service Users: 19,860

The **Vermont Manufacturing Extension Center (VMEC)** provides systems and solutions to help manufacturers innovate, plan, perform and grow. VMEC is an affiliate of the nationwide NIST MEP network and has a highly experienced staff of Manufacturing Advisors, Growth Coaches and Innovation Engineering Black Belt experts who provide confidential, hands-on implementation assistance, training, and coaching.

The **Vermont Small Business Development Center (VtSBDC)** is a statewide program of Vermont Technical College with a mission to positively impact and strengthen established business and start-up entrepreneurs through one-on-one, confidential, no-cost advising services.

Vermont Tech Continuing Education and Workforce Development designs and delivers workforce education and training for and to employers and individuals throughout Vermont. CEWD helps Vermont businesses meet their workforce and professional development needs, and improve their overall competitiveness and economic performance through a strong combination of regional access, statewide delivery and career-oriented content.

The Lyndon State College **Center for Rural Entrepreneurship** has helped create over 130 jobs in the Northeast Kingdom region, educates local businesses in best business practices, and employs students in relevant, paid learning opportunities. Its Kingdom Career Connect program, held in partnership with VSAC, provides middle school students hand-on experience with jobs in four high-growth industry sectors. The Center also partners with CCV to provide the **Governor's Career Readiness Certificate** training.

**2013-14 Workforce Education & Training
Participants: 7,394**

Vermont State Colleges

for the benefit of Vermont

2014 IMPACT

84%

of all VSC students
are Vermonters

\$192 million

in revenues generated

\$480 million

estimated economic impact

2,200

employees across 61
locations statewide

\$125 million

in wages and benefits paid

83%

of recent VSC graduates
stay in Vermont

50%

of VSC undergraduates are the first
in their families to attend college

Castleton State College

Community College of Vermont

Johnson State College

Lyndon State College

Vermont Tech

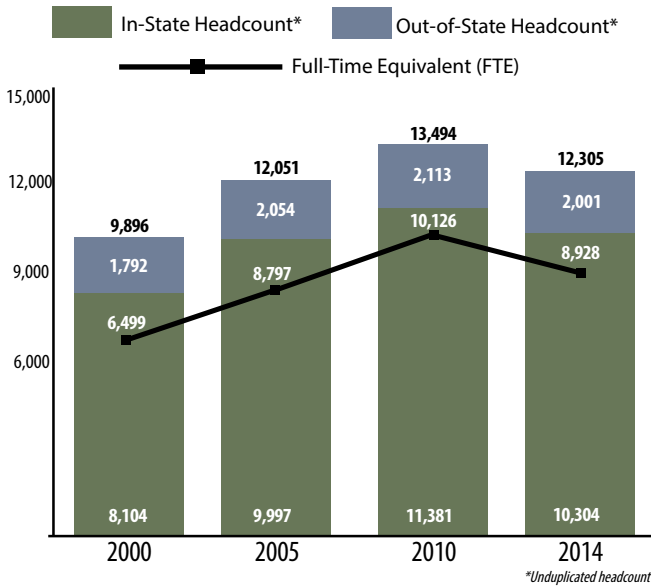
Over 32,000 VSC alumni live and work in Vermont.

Our Students

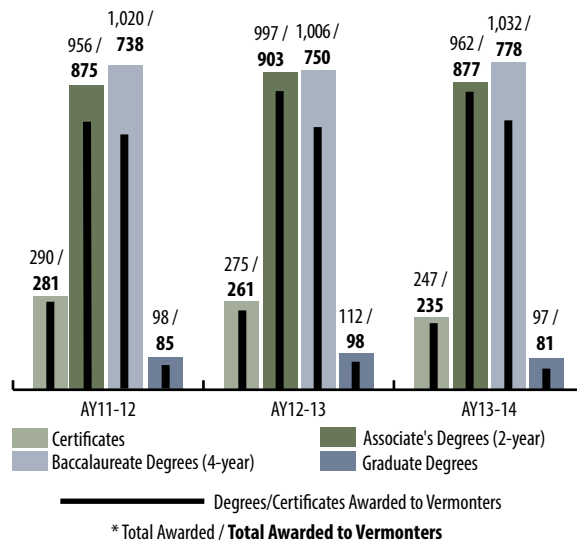
Our Graduates

Revenues & Expenditures

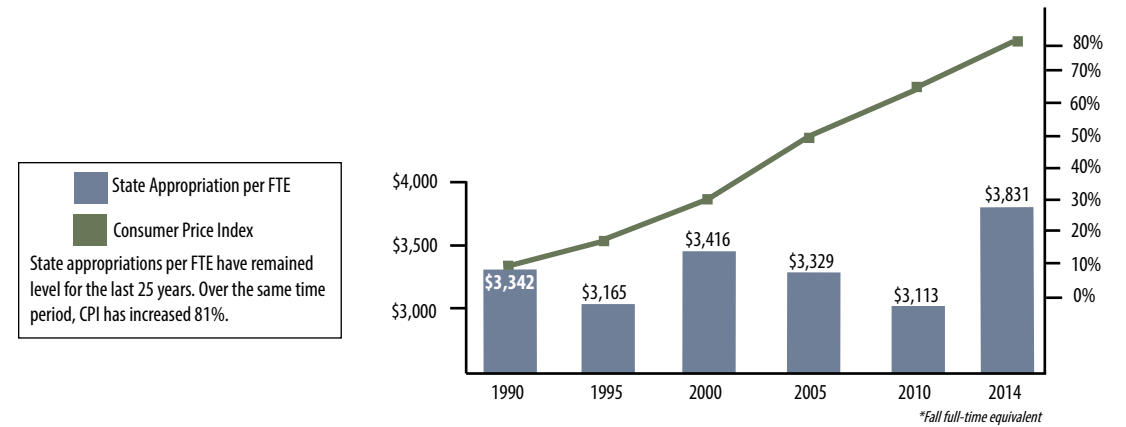
VSC Fall Enrollment



Degrees Awarded Annually

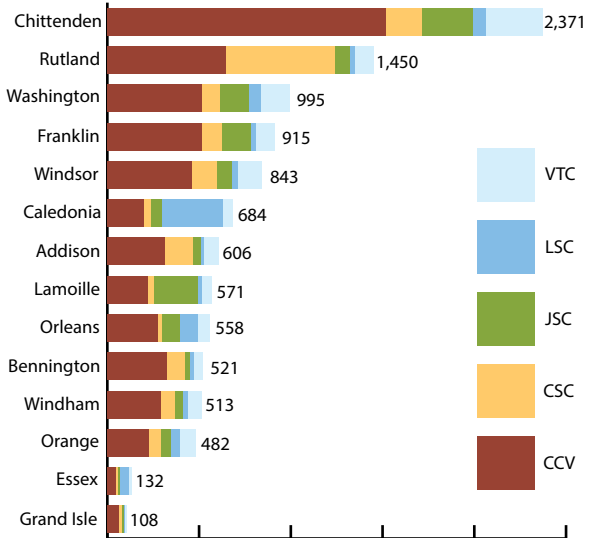


State Appropriation per FTE Vermonter*



Vermont ranks 47th in state appropriations per \$1,000 personal income.

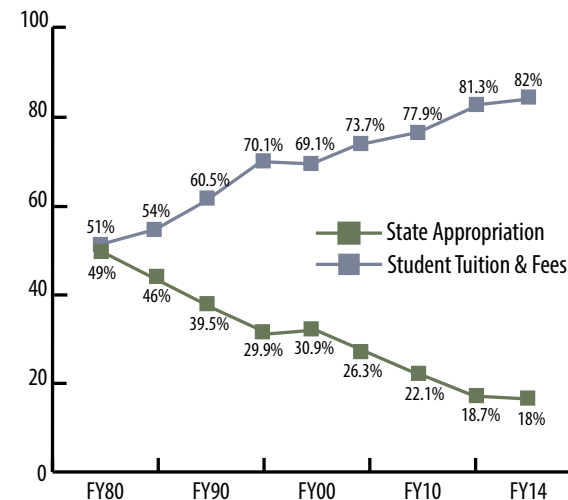
VSC Headcount Enrollment by County of Residence, Fall 2014



Degrees by Major Awarded 2013-2014

Health Professions	607
Liberal Arts & Humanities	344
Business, Management & Marketing	304
Public Administration, Social Services, Security Professions	138
Education	137
Psychology	133
Engineering Technologies	129
Visual & Performing Arts	97
Agricultural, Construction, Mechanic, Telecommunications Tech.	90
Family, Consumer, Leisure & Fitness Studies	83
Literature, Languages, Communications & Journalism	66
Natural Resources, Biological & Physical Sciences	66
Computer & Information Sciences & Technology	61
Social Sciences & History	50
Multi/Interdisciplinary Studies	20
Mathematics & Statistics	20

VSC Revenue: Tuition vs. State Funds



Tuition & Fees 2014-2015

	VT Student	Out-of-State
CCV	\$5,989	\$11,725
CSC, JSC, LSC	\$10,691	\$23,267
VTC	\$12,859	\$23,707
Room & Board	\$9,412	\$9,412

The Vermont appropriation per FTE is 43% of the national average.

The Vermont State Colleges are 82% tuition dependent. The state with the lowest percentage of college revenue coming from student tuition is Wyoming: 13%. The national average is 47.5%.